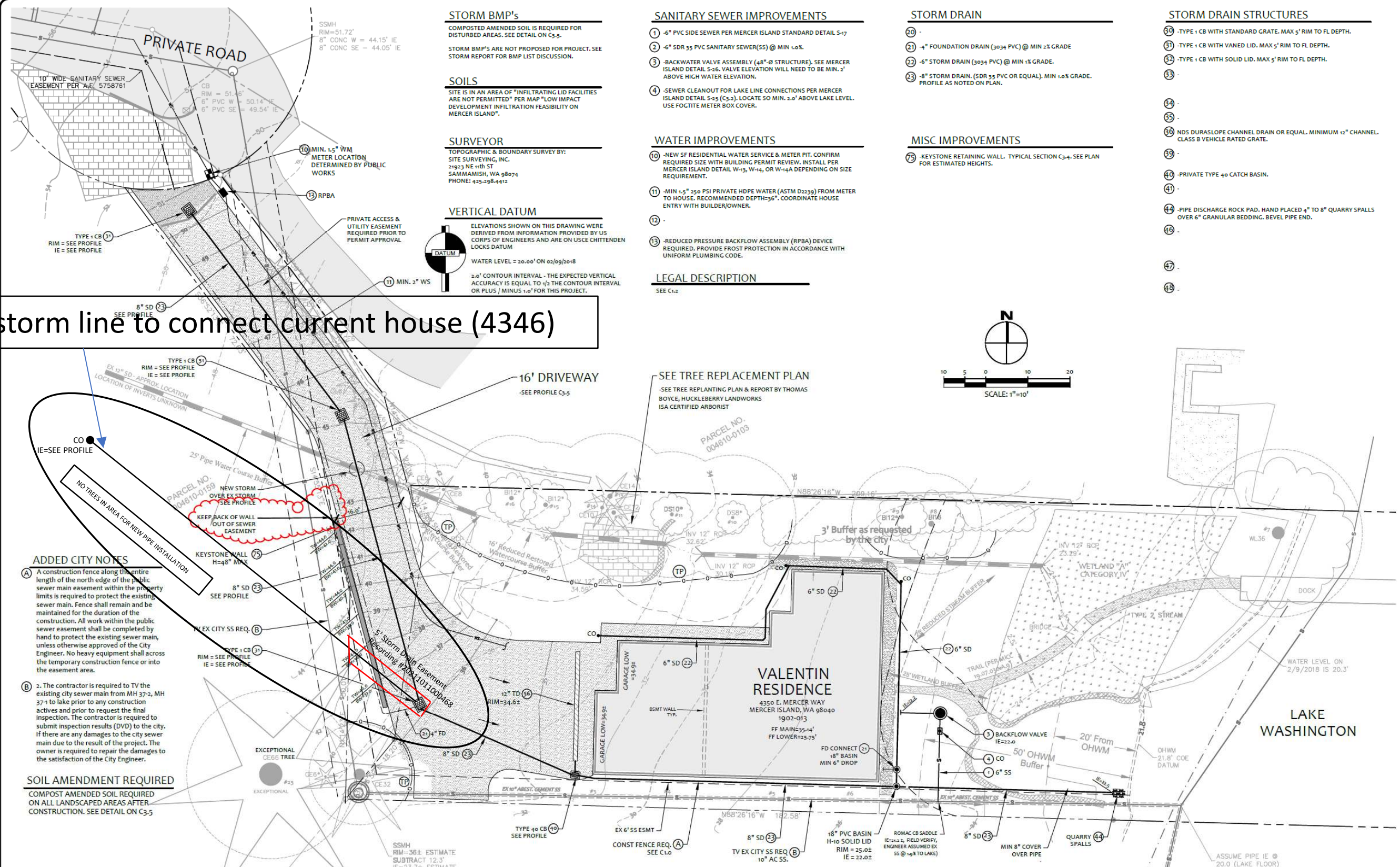


Add 6" storm line to connect current house (4346)



STORM BMP's
 COMPOSTED AMENDED SOIL IS REQUIRED FOR DISTURBED AREAS. SEE DETAIL ON C3-5.
 STORM BMP'S ARE NOT PROPOSED FOR PROJECT. SEE STORM REPORT FOR BMP LIST DISCUSSION.

SOILS
 SITE IS IN AN AREA OF INFILTRATING LID FACILITIES ARE NOT PERMITTED PER MAP "LOW IMPACT DEVELOPMENT INFILTRATION FEASIBILITY ON MERCER ISLAND".

SURVEYOR
 TOPOGRAPHIC & BOUNDARY SURVEY BY:
 SITE SURVEYING, INC.
 21923 NE 11th ST
 SAMMAMISH, WA 98074
 PHONE: 425-298-4412

VERTICAL DATUM
 ELEVATIONS SHOWN ON THIS DRAWING WERE DERIVED FROM INFORMATION PROVIDED BY US CORPS OF ENGINEERS AND ARE ON USCE CHITTENDEN LOCKS DATUM
 WATER LEVEL = 20.00' ON 02/09/2018
 2.0' CONTOUR INTERVAL - THE EXPECTED VERTICAL ACCURACY IS EQUAL TO 1/2 THE CONTOUR INTERVAL OR PLUS / MINUS 1.0' FOR THIS PROJECT.

SANITARY SEWER IMPROVEMENTS

- 6" PVC SIDE SEWER PER MERCER ISLAND STANDARD DETAIL S-17
- 6" SDR 35 PVC SANITARY SEWER (SS) @ MIN 1.0%.
- BACKWATER VALVE ASSEMBLY (48" Ø STRUCTURE). SEE MERCER ISLAND DETAIL S-26. VALVE ELEVATION WILL NEED TO BE MIN. 2' ABOVE HIGH WATER ELEVATION.
- SEWER CLEANOUT FOR LAKE LINE CONNECTIONS PER MERCER ISLAND DETAIL S-25 (C3-2). LOCATE SO MIN. 2.0' ABOVE LAKE LEVEL. USE FOGTITE METER BOX COVER.

WATER IMPROVEMENTS

- NEW SF RESIDENTIAL WATER SERVICE & METER PIT. CONFIRM REQUIRED SIZE WITH BUILDING PERMIT REVIEW. INSTALL PER MERCER ISLAND DETAIL W-13, W-14, OR W-14A DEPENDING ON SIZE REQUIREMENT.
- MIN 1.5" 350 PSI PRIVATE HDPE WATER (ASTM D2239) FROM METER TO HOUSE. RECOMMENDED DEPTH=36". COORDINATE HOUSE ENTRY WITH BUILDER/OWNER.
- REDUCED PRESSURE BACKFLOW ASSEMBLY (RPBA) DEVICE REQUIRED. PROVIDE FROST PROTECTION IN ACCORDANCE WITH UNIFORM PLUMBING CODE.

LEGAL DESCRIPTION
 SEE C1.2

STORM DRAIN

- 4" FOUNDATION DRAIN (3034 PVC) @ MIN 2% GRADE
- 6" STORM DRAIN (3034 PVC) @ MIN 1% GRADE.
- 8" STORM DRAIN. (SDR 35 PVC OR EQUAL). MIN 1.0% GRADE. PROFILE AS NOTED ON PLAN.

MISC IMPROVEMENTS

- KEYSTONE RETAINING WALL. TYPICAL SECTION C3.4. SEE PLAN FOR ESTIMATED HEIGHTS.

STORM DRAIN STRUCTURES

- TYPE 1 CB WITH STANDARD GRATE. MAX 5' RIM TO FL DEPTH.
- TYPE 1 CB WITH VANED LID. MAX 5' RIM TO FL DEPTH.
- TYPE 1 CB WITH SOLID LID. MAX 5' RIM TO FL DEPTH.
-
-
- NDS DURASLOPE CHANNEL DRAIN OR EQUAL. MINIMUM 12" CHANNEL. CLASS B VEHICLE RATED GRATE.
-
-
- PRIVATE TYPE 40 CATCH BASIN.
-
- PIPE DISCHARGE ROCK PAD. HAND PLACED 4" TO 8" QUARRY SPALLS OVER 6" GRANULAR BEDDING. BEVEL PIPE END.
-
-
-
-

ADDED CITY NOTES

A. A construction fence along the entire length of the north edge of the public sewer main easement within the property limits is required to protect the existing sewer main. Fence shall remain and be maintained for the duration of the construction. All work within the public sewer easement shall be completed by hand to protect the existing sewer main, unless otherwise approved of the City Engineer. No heavy equipment shall cross the temporary construction fence or into the easement area.

B. The contractor is required to TV the existing city sewer main from MH 37-2, MH 37-1 to lake prior to any construction activities and prior to request the final inspection. The contractor is required to submit inspection results (DVD) to the city. If there are any damages to the city sewer main due to the result of the project. The owner is required to repair the damages to the satisfaction of the City Engineer.

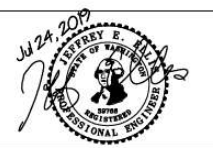
SOIL AMENDMENT REQUIRED
 COMPOST AMENDED SOIL REQUIRED ON ALL LANDSCAPED AREAS AFTER CONSTRUCTION. SEE DETAIL ON C3-5

NO.	DATE	BY	REVISIONS

APPLICANT:
 JOHAN VALENTIN
 PO BOX 52641
 BELLEVUE, WA 98015

811
 Know what's below.
 Call before you dig.

DATE: Jul 24, 2019
 JOB#: 1704
 DRAFTED: DE DESIGN: DE
 DIGITAL SIGNATURE

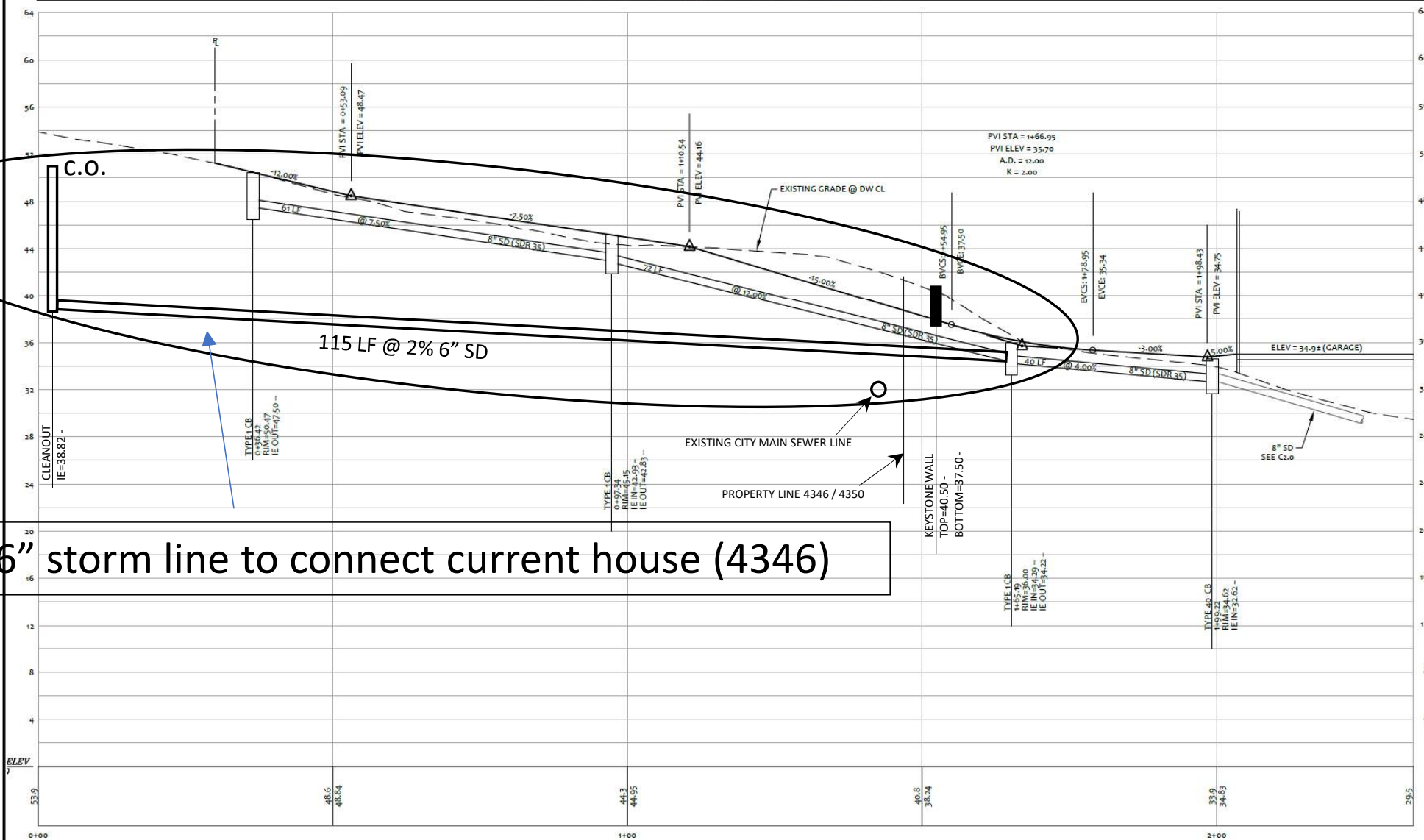


CIVIL ENGINEERING SOLUTIONS
 102 NW CANAL STREET SEATTLE, WA 98107
 PHONE: 206-930-0342 DUFFY@CESOLUTIONS.US

DRAINAGE / CIVIL PLAN
 VALENTIN RESIDENCE
 4350 E. MERCER WAY, MERCER ISLAND, WA 98040

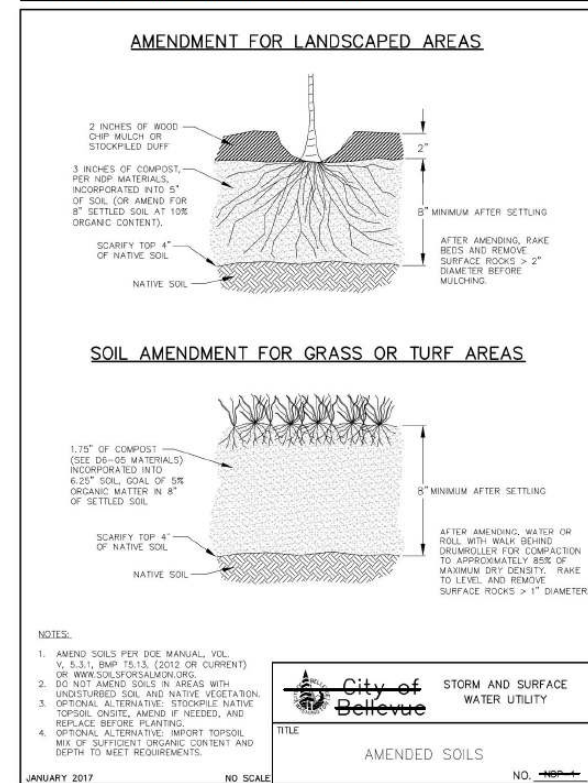
DRAWING NO:
C2.0
 APN 004610-0150
 1902-013

PRIVATE DRIVEWAY / STORM PROFILE



Add 6" storm line to connect current house (4346)

COMPOST AMENDED SOIL SPEC



NO.	DATE	BY	REVISIONS

APPLICANT:
JOHAN VALENTIN
PO BOX 52641
BELLEVUE, WA 98015

811
Know what's below.
Call before you dig.

DATE: May 08, 2019
JOB# 1704
DRAFTED: SS DESIGN: SS
DIGITAL SIGNATURE

May 08 2019
JOHAN VALENTIN
PROFESSIONAL ENGINEER

CIVIL ENGINEERING SOLUTIONS

102 NW CANAL STREET SEATTLE, WA 98107
PHONE: 206.930.0342 DUFFY@CESOLUTIONS.US

DRAINAGE DETAILS / STORM PROFILE

VALENTIN RESIDENCE
4350 E. MERCER WAY, MERCER ISLAND, WA 98040

DRAWING NO: C3.5
APN 004610-0150
1902-013